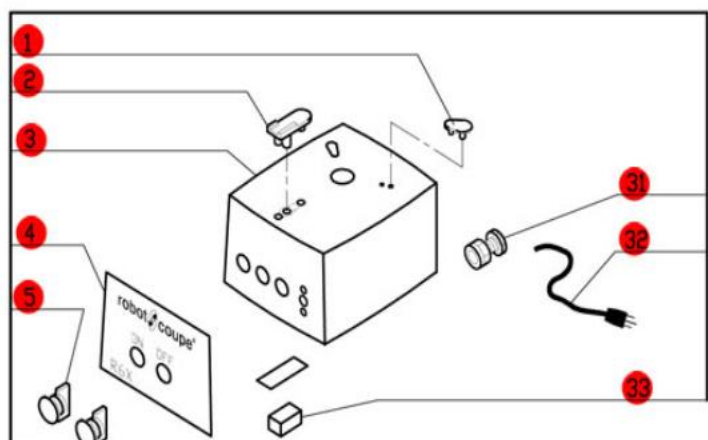
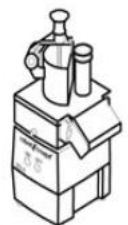
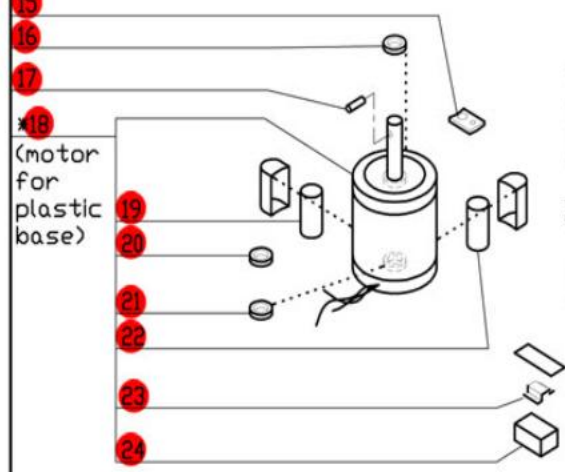
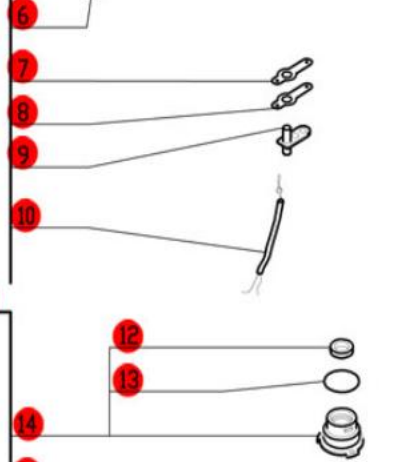
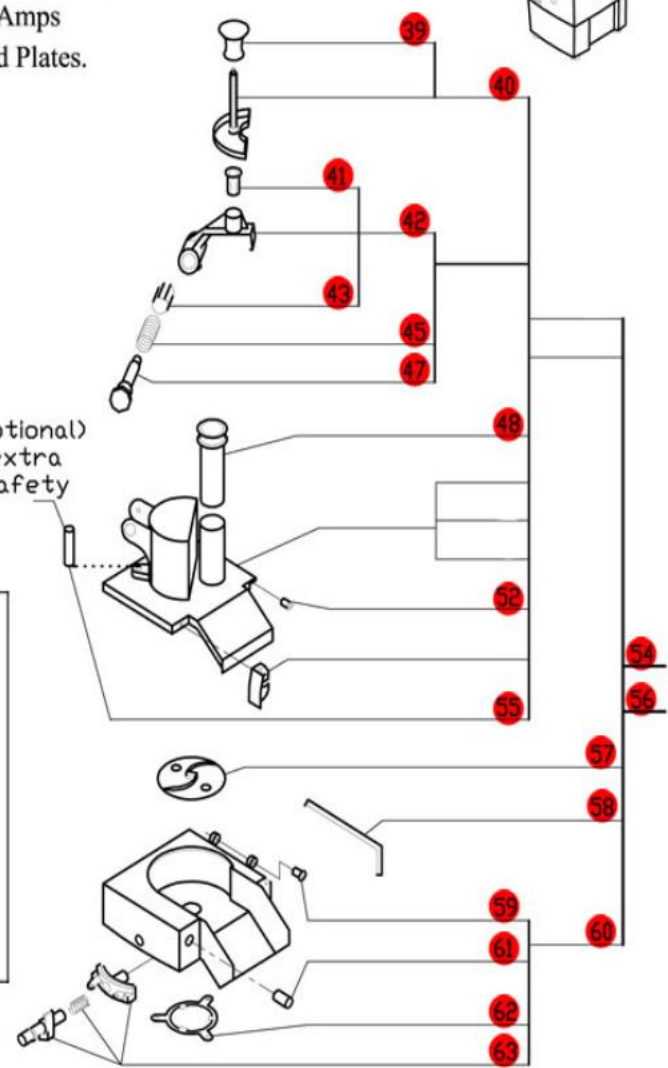


R6X Series A

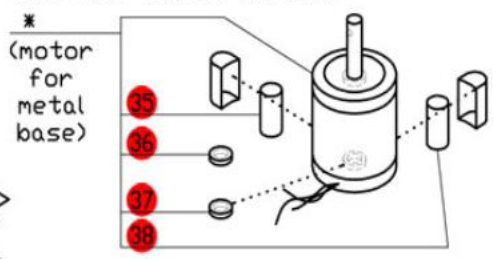
Series A, Serial Numbers R6XxxxxxxA
 1- Speed, 120 Volt, 1 Phase, 60Hz., 1 HP.
 850 RPM, 7.6 Amps
 Use C Designated Plates.



(Optional) extra safety



* RA604E Motor is no longer available. Order number SI94565, R611, 11770, 29620, and four BX658 screws.

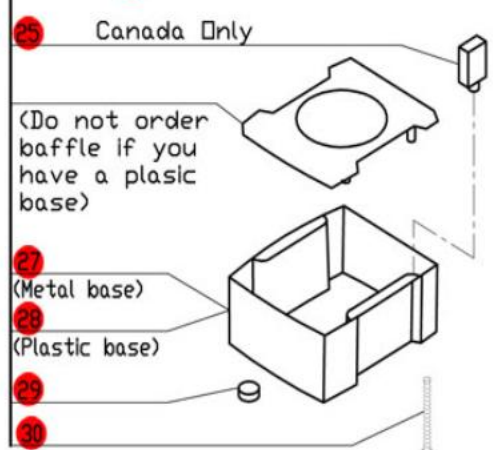


ACCESSORIES

NOTE: Use 'C' designated plates.

65
66
68

** No longer available **



**Click on Red Dot
 OR
 Call us
 800-465-6060**